

Computing

We will be continuing to use our Purple Mash software to develop our skills by using spreadsheets.



Design and Technology

We will be designing and making our own drawstring bags in our textiles unit of work!

Music

Violins and our School Production rehearsals!



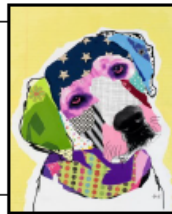
P.E.

Football and Rounders



Art and Design

We will be exploring the mixed-media art of Michel Keck and creating our own animal-inspired art!



PSHE and RSE

Core theme 3: Living in the wider world...
What makes a community?



Summer Term

2025/26

Key Stage Two



Curriculum Information

A booklet for parents

English

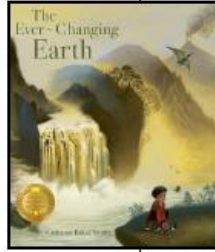
This term we will be:

Exploring 'The Ever-Changing Earth' by Grahame Baker-Smith and 'Minnow on the Say' by Philippa Pearce.

Writing a diary entry based on The Ever-Changing Earth.

Writing an explanation text based on the water cycle.

Consolidating and revising all of our taught grammar through these pieces of writing and our Sentence, Not Sentence activities.



Mathematics

- ◇ We will be continuing to explore fractions (Y3 & Y4) and decimals (Y4).
- ◇ We will then explore time and money, alongside statistics.
- ◇ Finally, we will learn about the properties of shapes and position and direction.
- ◇ All this will be following White Rose Maths, supplemented with other high-quality resources to develop our reasoning and mastery skills!
- ◇ The Year 4s will also be taking their MTCs this term! Exciting!



Religious Education

Our big question for the Summer Term is...

What is it like to follow God?

Geography

This term we will be exploring 'Rivers':

- ◇ Where can rivers be found in the UK locally and elsewhere in the world.
- ◇ How are rivers formed?
- ◇ What is erosion?
- ◇ What is the water cycle?
- ◇ The features and parts of a river.
- ◇ Where rivers start and end.
- ◇ How materials are deposited and transported by rivers.
- ◇ We will be comparing a river to another water environment.
- ◇ We will be conducting some fieldwork based on investigating rivers.



Science

This term will be exploring: Plants!

We will be exploring what plants need to grow and investigating how changing these factors can affect a plant's growth.

Learning about photosynthesis and what parts of the plant are involved in it.

Investigating how water is transported around plants.

Exploring why flowers are important parts in the life cycle of a flowering plant.

Understand the pollination process and how seeds are dispersed.

